

A Tour of European Museums (June 2025)

Robert G. De Cesaris
October 2025

October 23 - 26, 2025

INTERNATIONAL MEETING 2025
Cambridge/Boston MA



Celebrating 400 Years Since
the Invention of the Slide Rule

Brief Overview of the Museums that were Visited

- This is the trip of.....
- A man who enjoys everything math, science, technology, and especially old technology like slide rules and mechanical who majored in Electrical Engineering and Computer Science and then Mathematical Physics.....
- And a woman who majored in Finance and Accounting who loves Art History and who knows all of the famous paintings and where they are all located.
- Tour included Paris (Versailles, Le Louvre, **Musée des Artes et Métiers**, and Musée d'Orsay), Amsterdam (Rijksmuseum), The Hague (Mauritshuis), a cruise up the Rhine, and a visit to Florence (Galleria dell'Accademia di Firenze, Uffizzi, and **Museo Galileo**)

A European Museums Tour



Le Louvre (Originally build as a fortress in the late 12th century, then became a Royal residence, and finally transitioned to a museum in 1793

INTERNATIONAL MEETING 2025
Cambridge/Boston MA

A European Museums Tour



INTERNATIONAL MEETING 2025
Cambridge/Boston MA

A European Museums Tour



‘The Coronation of Napoleon’ by Jacques Louis David, 1806-07

INTERNATIONAL MEETING 2025
Cambridge/Boston MA

A European Museums Tour



INTERNATIONAL MEETING 2025
Cambridge/Boston MA

A European Museums Tour



'The Money Lender and His Wife' by Quentin Matsys 1514, Flemish Renaissance Painter

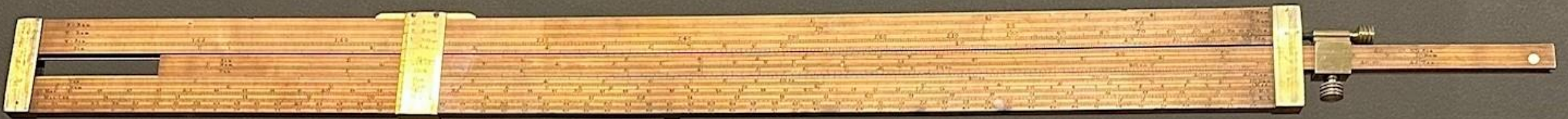
INTERNATIONAL MEETING 2025
Cambridge/Boston MA

A European Museums Tour



INTERNATIONAL MEETING 2025
Cambridge/Boston MA

A European Museums Tour



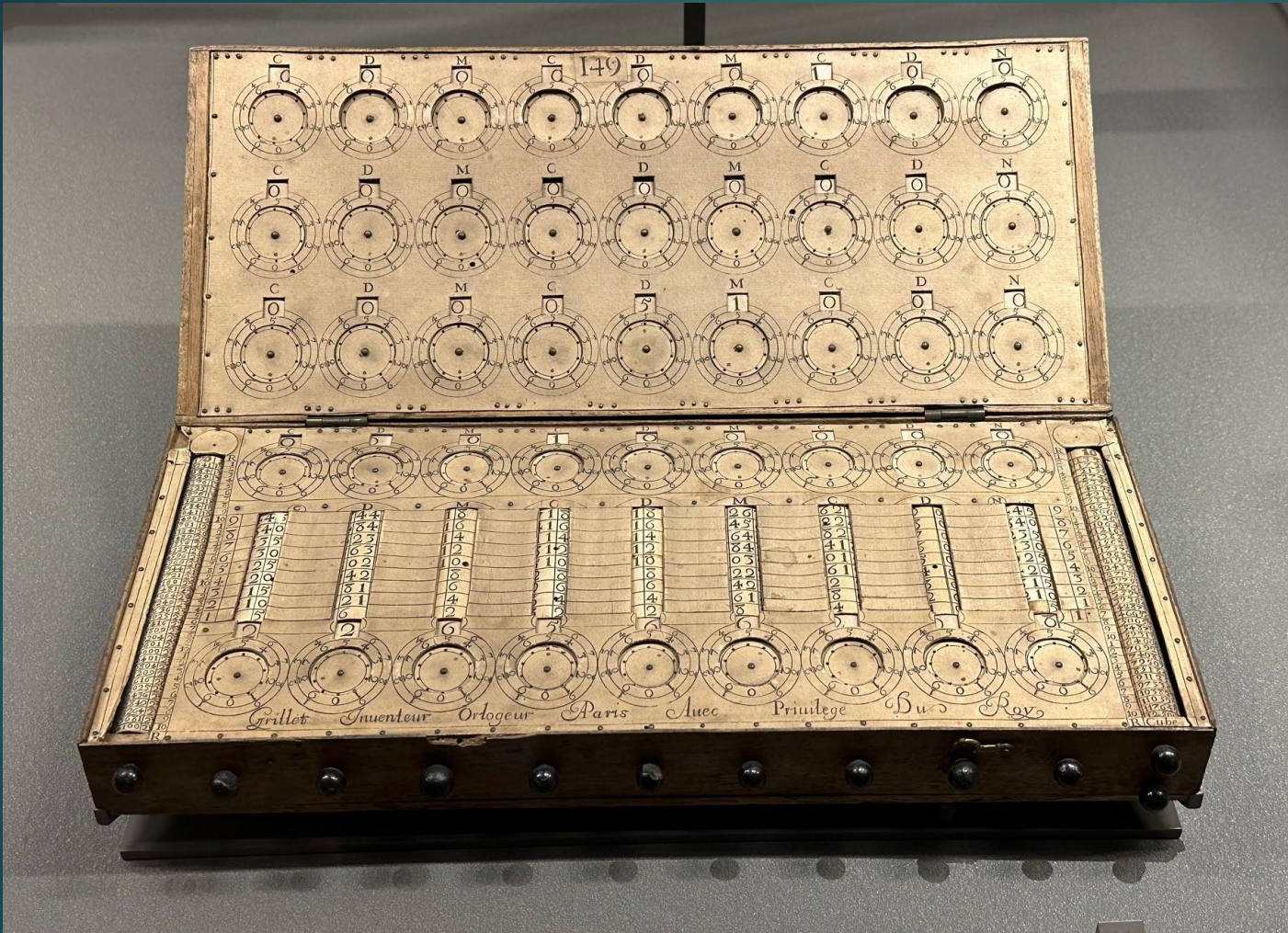
4 Règle à calcul de Partridge,
1671

Inv. 5559

Slide rule by Partridge, 1671

INTERNATIONAL MEETING 2025
Cambridge/Boston MA

A European Museums Tour



11 Machine arithmétique de Grillet, 1678

Inv. 798-1

Arithmetical machine by Grillet, 1678

A European Museums Tour



INTERNATIONAL MEETING 2025
Cambridge/Boston MA

A European Museums Tour



INTERNATIONAL MEETING 2025
Cambridge/Boston MA

A European Museums Tour

CHRISTIE'S PRESS CENTRE

[SALE RESULTS](#) [CORPORATE NEWS](#) [PRESS TEAM](#) [ARCHIVES](#)

Search by keyword



INTERNATIONAL MEETING 2025
Cambridge/Boston MA

A European Museums Tour

CHRISTIE'S PRESS CENTRE

[SALE RESULTS](#) [CORPORATE NEWS](#) [PRESS TEAM](#) [ARCHIVES](#)

Search by keyword



Blaise Pascal (1623-1662) The Pascaline, surveying machine: 8 Wheels : 5 of 10, 1 of 6 and 2 of 12, 36 × 12.5 × 6.5 cm, 1642, Brass, wooden box decorated with ebony sticks Estimate €2,000,000-3,000,000 © Christie's images Limited 2025

Only nine original models of this major scientific and technical revolution remain in existence, all **of which are held in museums across Europe**: These include a model in Clermont-Ferrand, a model in Dresden, a model in Bonn belonging to the IBM collection, and a later version at the Musée des Arts et Métiers in Paris.

The model offered for sale is the only one still in private hands.

It is also the **only known model dedicated to survey calculations**. Despite its age, which entitles the *Pascaline* to a well-earned rest, this illustrious 17th century arithmetic machine is still fully functional.

A European Museums Tour

CHRISTIE'S PRESS CENTRE

[SALE RESULTS](#) [CORPORATE NEWS](#) [PRESS TEAM](#) [ARCHIVES](#)

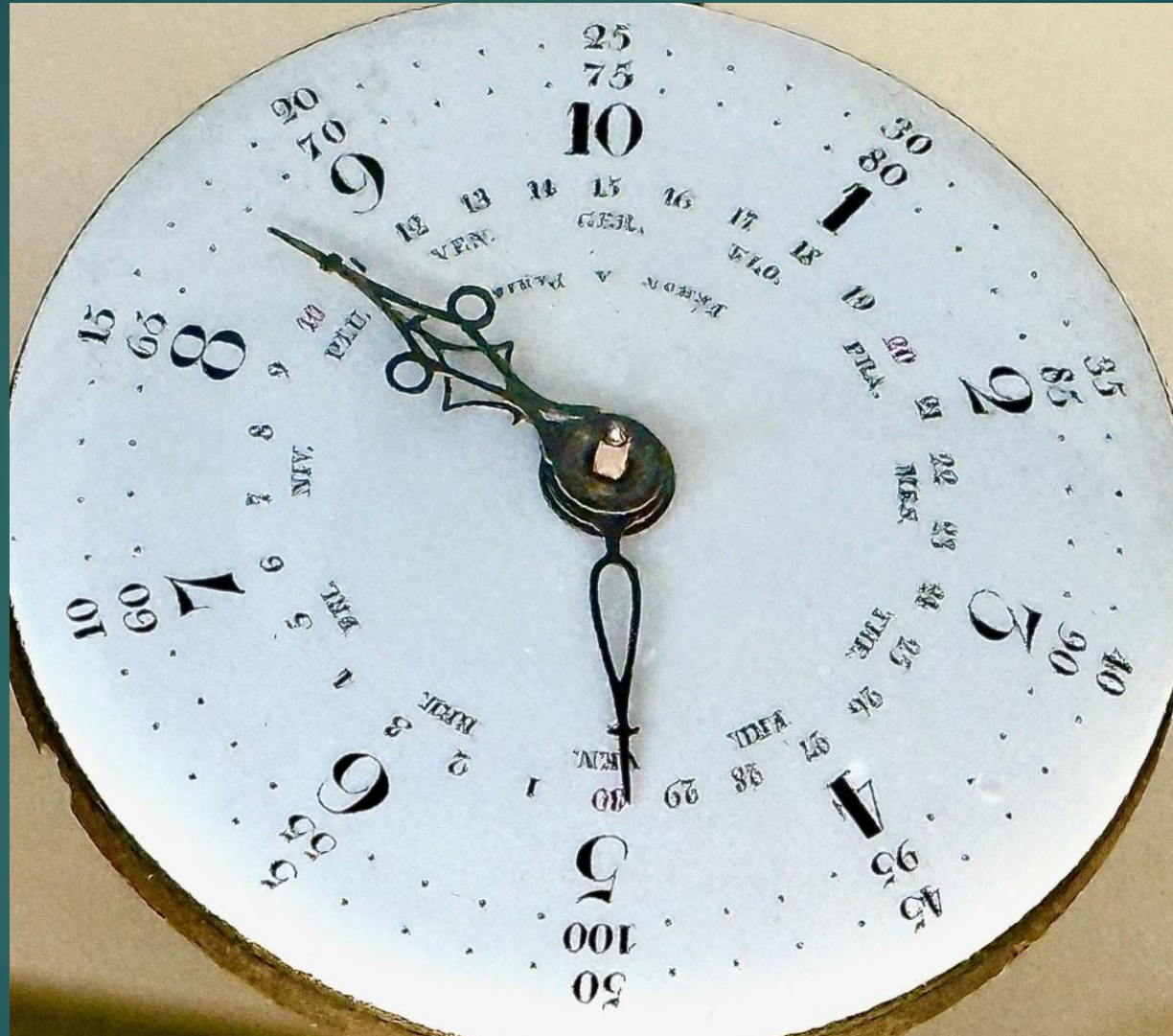
Search by keyword



Blaise Pascal (1623-1662) The Pascaline, surveying machine: 8 Wheels : 5 of 10, 1 of 6 and 2 of 12, 36 × 12.5 × 6.5 cm, 1642, Brass, wooden box decorated with ebony sticks Estimate €2,000,000-3,000,000 © Christie's images Limited 2025

INTERNATIONAL MEETING 2025
Cambridge/Boston MA

A European Museums Tour



The French Revolution and French Decimal Time

INTERNATIONAL MEETING 2025

Cambridge/Boston MA

A European Museums Tour



Very rare mechanical calculator by Didier Roth

Patented in 1842 fewer than 50 were made

Direct evolution of Pascal's design but incorporated advancements for more reliable operation

The Musée des Artes et Métiers collection currently has 20 examples of Roth's Adding Machine,

A European Museums Tour



INTERNATIONAL MEETING 2025
Cambridge/Boston MA

A European Museums Tour



INTERNATIONAL MEETING 2025
Cambridge/Boston MA

A European Museums Tour



Cambridge/Boston MA

A European Museums Tour



INTERNATIONAL MEETING 2025
Cambridge/Boston MA

A European Museums Tour



INTERNATIONAL MEETING 2025
Cambridge/Boston MA

A European Museums Tour



‘ The Girl with the Pearl Earring’ by Johannes Vermeer ca. 1665 (Mauritshuis)

INTERNATIONAL MEETING 2025
Cambridge/Boston MA

A European Museums Tour



Cologne Cathedral, A 13th century Gothic Roman Catholic Cathedral

INTERNATIONAL MEETING 2025
Cambridge/Boston MA

A European Museums Tour



Cologne, After Extensive RAF and Allied Bombing During WWII

INTERNATIONAL MEETING 2025

Cambridge/Boston MA

A European Museums Tour



Cologne, After Extensive RAF and Allied Bombing During WWII

INTERNATIONAL MEETING 2025
Cambridge/Boston MA

A European Museums Tour



INTERNATIONAL MEETING 2025
Cambridge/Boston MA

A European Museums Tour



Piazza del Duomo (Florence Cathedral), Dome by Filippo Brunelleschi (1420-1436)

INTERNATIONAL MEETING 2025
Cambridge/Boston MA

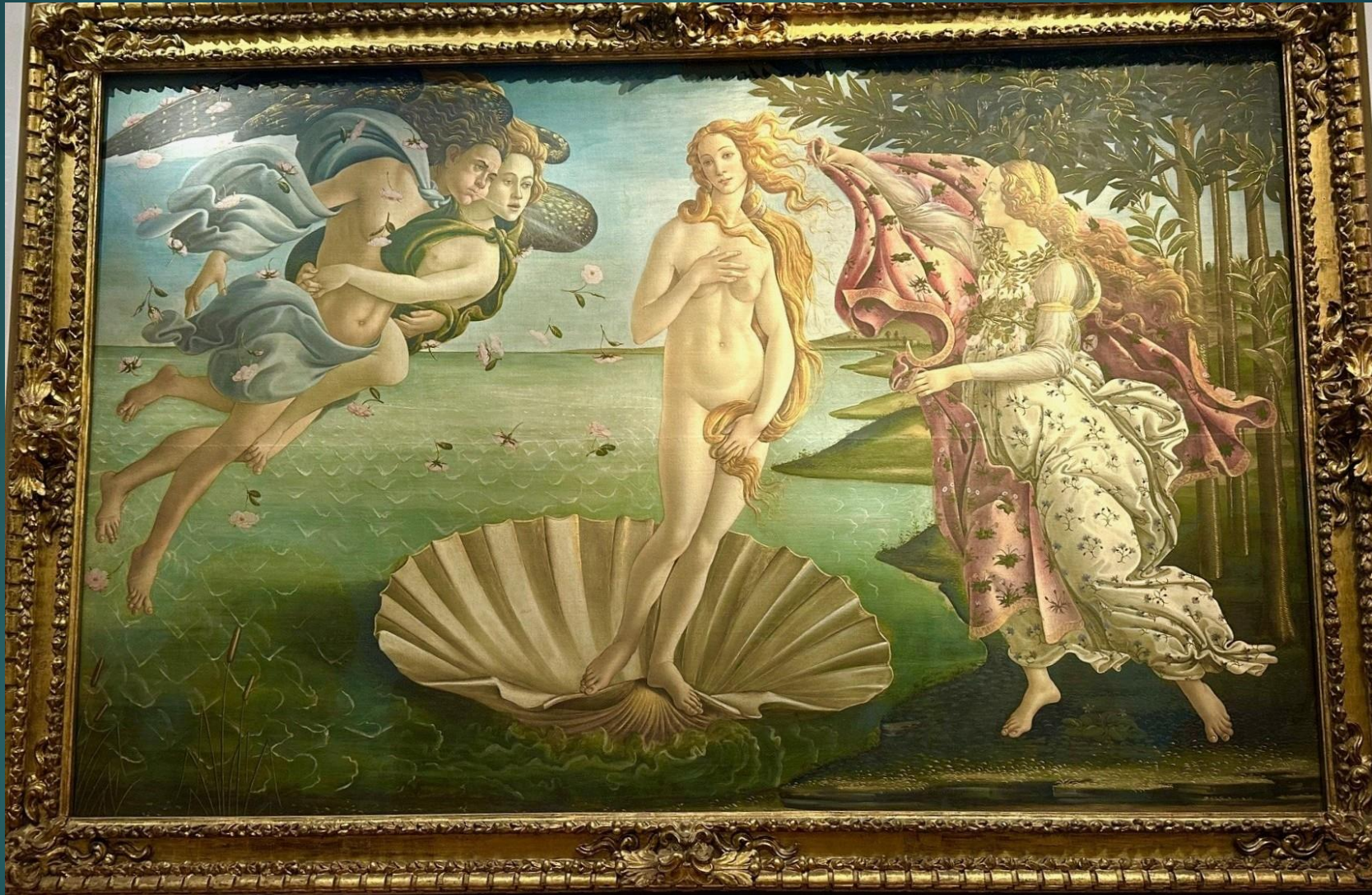
A European Museums Tour



“The Gates of Paradise, Gilded Bronze Doors, East Entrance Florence Baptistery, Lorenzo Ghiberti (1425 – 1452)

INTERNATIONAL MEETING 2025
Cambridge/Boston MA

A European Museums Tour



‘The Birth of Venus’ by Sandro Botticelli, mid-1480s

INTERNATIONAL MEETING 2025

Cambridge/Boston MA

A European Museums Tour



'Medusa' by Michelangelo Merisi da Caravaggio, also a Self-Portrait of the Painter

A European Museums Tour



3

Macchina calcolatrice

Henri Sutton

Samuel Knibb

Londra, 1664

inv. 679

Calculating machine

Henri Sutton

Samuel Knibb

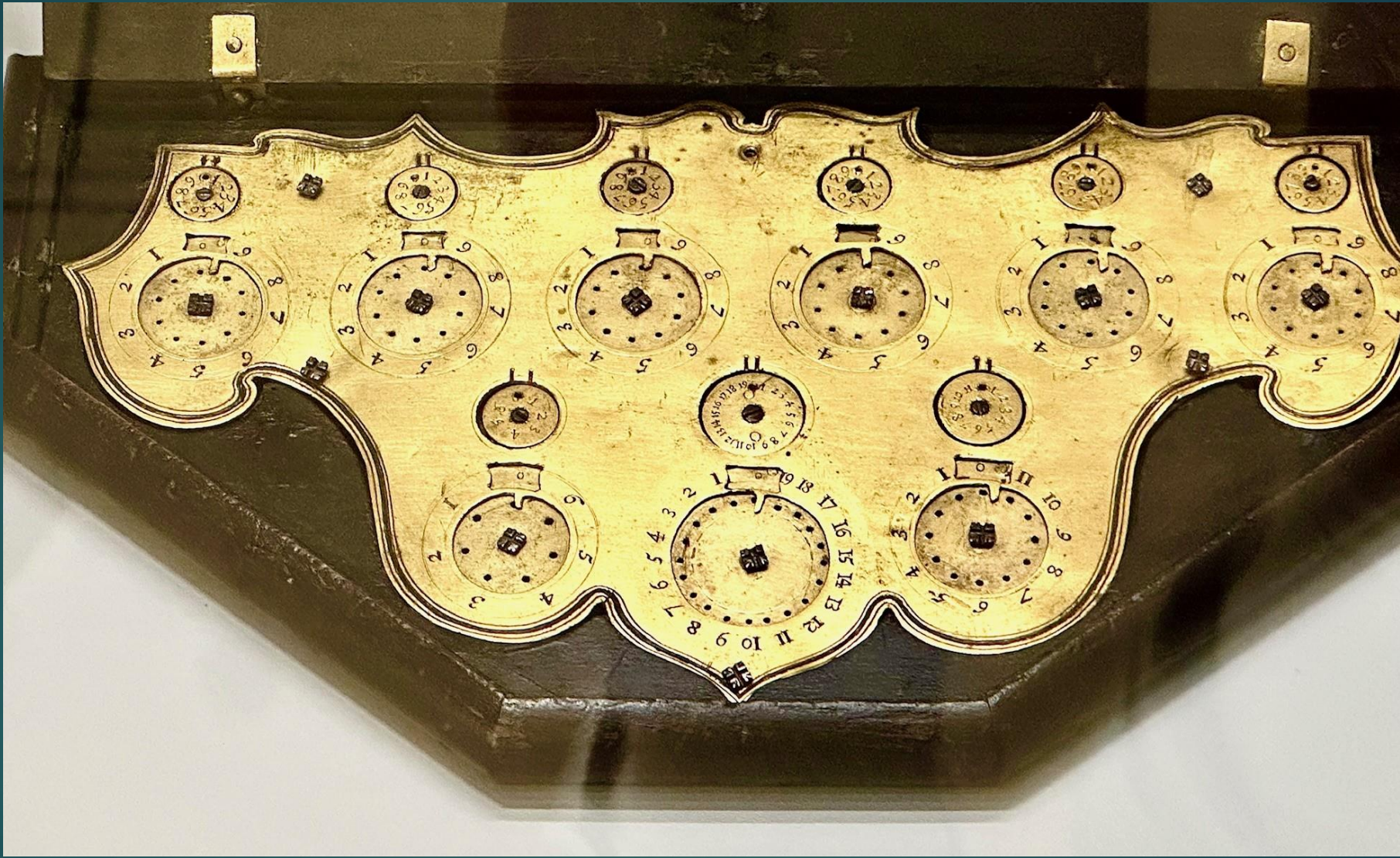
London, 1664

A European Museums Tour



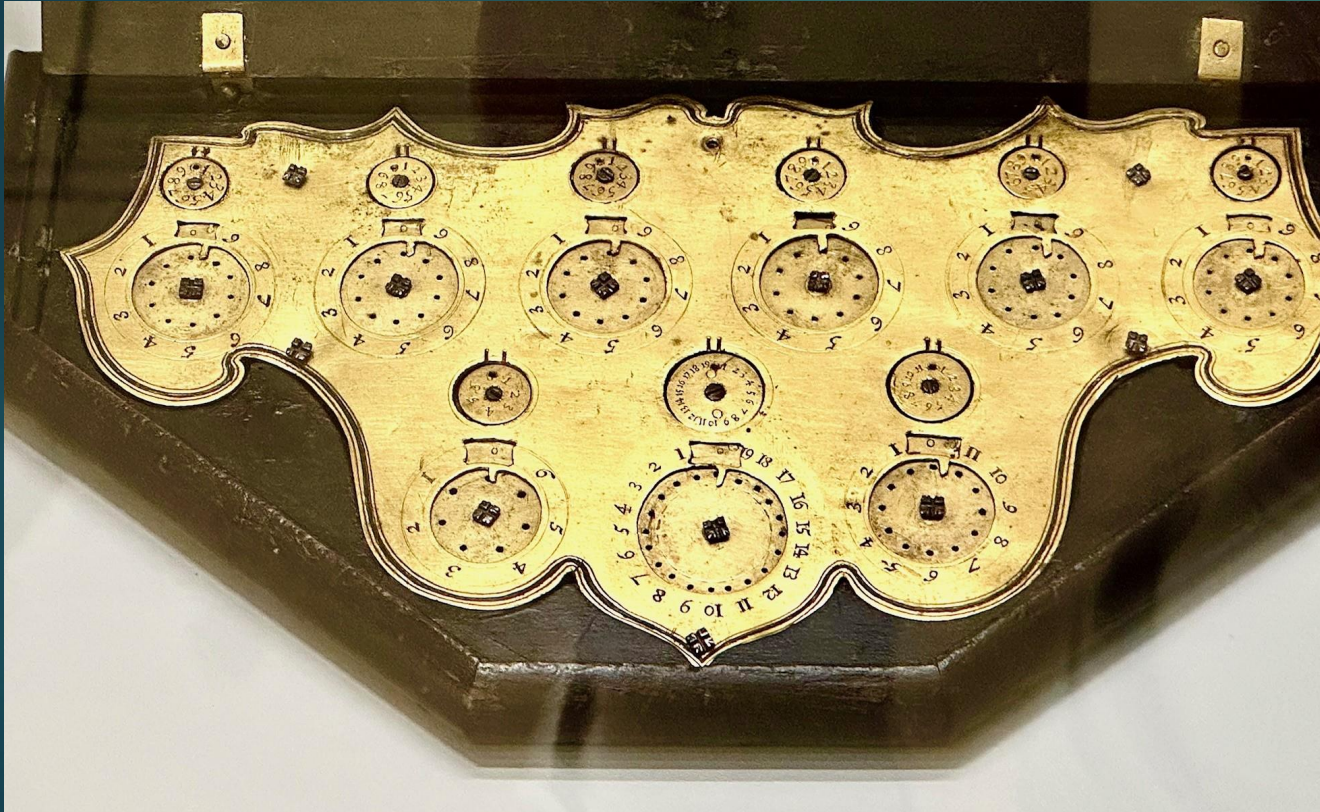
An Early Example of a Sector, or Military Compass by Galileo, 1606 (initial invention 1597)

A European Museums Tour



INTERNATIONAL MEETING 2025
Cambridge/Boston MA

A European Museums Tour



Macchina calcolatrice

Anonimo

fattura italiana

prima metà sec. XVII

inv. 3179

A European Museums Tour



Galileo's Middle Finger, On Display at the Museo Galileo, Florence

INTERNATIONAL MEETING 2025
Cambridge/Boston MA